



Narrowboat Holidays on the Leeds & Liverpool Canal

www.canalboatescapes.co.uk

info@canalboatescapes.co.uk

0800 3213541

Introduction to your boating holiday

Your family or crew will never forget the fun of learning to handle a narrowboat and the shared experience of working the locks.

Travel as far as you wish, pacing yourself for the return journey - excuse the cliché, but it really never looks the same on the way back. Most of the canals were built over 200 years ago as commercial transport routes - the regular refreshment points of those times remain as the pubs and restaurants of today.



Staying on one of our boats compares to a holiday cottage, with the added advantage that your holiday home can take you wherever you want to go.

With the simple controls, no experience is necessary and as part of our service we will show you everything you need to do with the boat and canals. The boats have plenty of storage space, central heating, shower, tv/dvd and a fully equipped kitchen.

We clean, check and service the boats between every cruise to ensure that they meet our rigorous standards, and are ready to welcome you when you arrive at the start of your holiday



Where can I Cruise?

How far you go depends on a number of factors; how early you get up and go to bed, how energetic you want the holiday to be and how many other boaters are using the canal. The routes suggested below are not exhaustive but may give you an idea of the places you can visit.

You will travel at approximately 3-4 miles per hour and the same applies to the number of locks per hour. The enjoyment from narrowboating comes from meandering along, taking in the scenery and wildlife and of course stopping at the odd pub!

To some, circular routes offer the advantage of only seeing the sights once but you must ensure you keep to your schedule in order to achieve the plan. We have included 2 circular routes but both require at least 2 weeks' hire.

The following are suggested cruising routes from our base in Barnoldswick.

1 Week Cruises

Pendle and beyond

Pendle is named after the famous Pendle Hill that dominates the landscape around. The hill has captivated the imaginations of many. The Pendle Witches are indelibly connected with many villages in Pendle and the hill itself. On the other side of the religious spectrum, Pendle Hill is famous for its links to the Quaker movement. George Fox founded the Quaker movement after climbing Pendle Hill in 1652. On a topical note, it is the birthplace of the band master of the Titanic, Wallace Hartley. Pendle is an ideal place for walkers and outdoor enthusiasts. There are recognized walks in the area, the Pendle Way and Brontë Way; there are many off-the-beaten-track walks with splendid views. Pendle was one of the industrial centres of the North of England from the 17th to the 20th centuries. The legacy of the now extinct cotton industry is engrained in the culture of Pendle. The only remaining connection to textiles is a plethora of mill shops selling textiles (and more) at bargain prices. Pendle is the textile mill shop capital of the world and you can moor right outside one at Barden Mill !

Beyond Pendle you will travel through the Mill centres of East Lancashire, Blackburn and Burnley. From the canal you will see the remains of the north's once great cotton industry - now sadly derelict in many cases. Both towns are enjoying a revival and many of the mills are enjoying conversion to apartments with great views over the Pendle Hills. We can advise you where it is preferable to moor overnight. The trip is certainly worthwhile. Some of the views are fabulous and Johnson's Hill Locks are simply delightful.

On arrival at Adlington you can take a train to Manchester to explore the North West's premier city.



Bingley 5 Rise and back

This route is arguably one of the most beautiful on the entire canal network and our guest never fail to be wowed by the magnificent scenery on the entire trip.

Wind your way around the rugged landscaped before descending the beautiful flights of locks at Bank Newton and Gargrave.

In Skipton you can explore the 'Gateway to the Dales'. There are numerous attractions such as the Castle and popular Market. Explore some of the surrounding villages such as Embsay (Embsay and Bolton Abbey Steam Railway) and Malham with its Limestone Pavement and Tarn.

Leaving Skipton, travel through lovely wooded areas and through delightful villages such as Kilwick and Bradley before your arrival at Bingley.

Where can I Cruise?

2 Week Cruises

Manchester (Relaxing)

Across the Pennines in Lancashire lies the great rival to Yorkshire's no.1 city - Manchester. Manchester sees itself as the new Barcelona, a cool, classless, cosmopolitan twenty four hour party capital with style. And the best bit.....you can moor up slap bang in the centre of the most vibrant part of the city - Castlefield basin - and soak up the atmosphere.

Those of you wanting 100% relaxation may choose to moor at Adlington and take the regular train to Manchester. For the more adventurous lies one of the big challenges of the Waterways, The Wigan Flight consisting of 21 broad locks in rapid succession. This drops the canal down to the level of the lock free Bridgewater Canal and onto Manchester.

Leeds

From our base, you can cruise to Leeds and back - the fastest growing city in the north of England. Leeds has undergone a complete metamorphosis over the past 20 years and is no longer the butt of flat cap and whippet jokes, Leeds is happening.....

This route takes in glorious views as the canal skirts around the contours of the Yorkshire Dales coupled with a flavour of the once industrial heartland of West Yorkshire. Take time to stop off in the wonderful market town of Skipton. Experience the 5 Rise Locks at Bingley, one of the wonders of the waterways. Saltaire offers the opportunity to stroll round the model village and mill created by the 19th century entrepreneur Sir Titus Salt. For the Art lovers amongst you, Salts Mill now houses the David Hockney exhibition.

3 Week Cruises

Rochdale Circular (Strenuous and only on Grace due to length limitations on the Calder and Hebble)

Travel via either Manchester or Leeds to join the fabulous Rochdale canal to give you a full circular route through broad locks.

Huddersfield Circular (Strenuous and only on Grace due to length limitations on the Calder and Hebble)

To achieve this route in 2 weeks will require meticulous planning and timekeeping as Standedge Tunnel is now only open 2 days per week. Miss the passage at your peril! This route takes in all of the 1 week cruise routes plus some of the commercial Aire and Calder and Calder and Hebble with its short locks and unusual paddle gear.

Arriving in Huddersfield via the short Broad Canal, you will moor overnight ready to face the 34 'E' locks of the Huddersfield Narrow Canal which take you through Slaithwaite (pronounced Sla-wit - the a as in apple) to Marsden. You won't go hungry or thirsty in Marsden. The Luddites used to drink here, planning their next mass act of sabotage and it's still a fine place to booze away an afternoon even if you don't actually smash up a loom!! Enjoy a gentle stroll up to the lovely Tunnel End Inn before retiring for the night.

If the electric passenger module is operating, enjoy the fascinating trip through Standedge tunnel, otherwise the walk over Marsden Moor is just as enjoyable.

At the other side, it's all downhill through delightful Uppermill to the Ashton Canal and into Manchester.

Cheshire Ring

The Cheshire Ring would also require at least 3 weeks and with good planning can be achieved without turning round. Take the Leeds and Liverpool towards Manchester (easier in our opinion to go down the Wigan Flight) and then join the ring at Waters Meeting (Stretford). Travel south on the Bridgewater joining the Trent and Mersey at Preston Brook then enjoy the challenge of the Cheshire Locks before turning onto the Macclesfield Canal just before Harecastle Tunnel. The Macclesfield is a truly relaxing canal with just one flight of 12 locks at Bosley. Turn onto the Peak Forest at Marple, down the flight and join the Ashton Canal at Dukinfield Junction. To travel back to Barnoldswick you have 3 options here 1) abandon the ring and turn right towards the Huddersfield Narrow, 2) left down to Piccadilly Basin then up and over the Rochdale or 3) back into Manchester and retrace your steps up the Leeds & Liverpool.

Weekly Hire Charges

2009

All prices shown are in £'s per boat, per week

The price is inclusive of:

- ✓ Diesel fuel
- ✓ Gas
- ✓ Car parking
- ✓ Bed linen & Towels
- ✓ Buoyancy aids
- ✓ Welcome pack
- ✓ Boat licence for all BW controlled navigations

Pricing:

In addition to the hire charge you will be required to pay security/Damage Deposit £250 via a credit card swipe on collection of the boat.

Friday Start Holidays				Saturday Start Holidays			
Friday Start 2009	Genevieve's Price	Friday Start 2009	Genevieve's Price	Saturday Start 2009	Grace's Price	Saturday Start 2009	Grace's Price
27 Feb	£650	03 Jul	£1095	28 Feb	£578	04 Jul	£1050
06 Mar	£650	10 Jul	£1095	07 Mar	£578	11 Jul	£1050
13 Mar	£795	17 Jul	£1195	14 Mar	£735	18 Jul	£1155
20 Mar	£795	24 Jul	£1195	21 Mar	£735	25 Jul	£1155
27 Mar	£795	31 Jul	£1195	28 Mar	£735	01 Aug	£1155
03 Apr	£855	07 Aug	£1195	04 Apr	£788	08 Aug	£1155
10 Apr	£855	14 Aug	£1195	11 Apr	£788	15 Aug	£1155
17 Apr	£855	21 Aug	£1195	18 Apr	£788	22 Aug	£1155
24 Apr	£855	28 Aug	£1195	25 Apr	£788	29 Aug	£1155
01 May	£895	04 Sept	£895	02 May	£840	05 Sept	£840
08 May	£895	11 Sept	£895	09 May	£840	12 Sept	£840
15 May	£895	18 Sept	£855	16 May	£840	19 Sept	£787
22 May	£895	25 Sept	£855	23 May	£840	26 Sept	£787
29 May	£995	02 Oct	£650	30 May	£945	03 Oct	£578
05 Jun	£1095	09 Oct	£650	06 Jun	£1050	10 Oct	£578
12 Jun	£1095	16 Oct	£650	13 Jun	£1050	17 Oct	£578
19 Jun	£1095	23 Oct	£650	20 Jun	£1050	24 Oct	£578
26 Jun	£1095	30 Oct	£650	27 Jun	£1050	31 Oct	£578

If you book a 2nd week, take 15% off the price of your holiday.

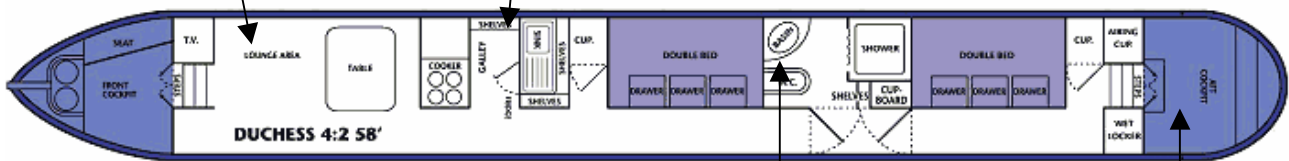
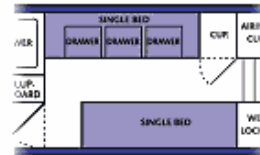
If you book a 3 weeks or more take 25% off the price of your holiday.

What's on board Grace?

The lounge area has 2 easy chairs and 2 poufs. There is a radio/CD player and a TV/DVD. There is also a selection of games onboard.

The galley has a 4 ring gas cooker, full size oven and grill. An electric fridge with freezer compartment. All cooking utensils are supplied.

This berth comprises of two single bunks or one double bed equipped with sprung mattresses, built in wardrobes and partition doors for extra privacy



There is a shower room with a wash hand basin and flush toilet. All towels are included for your cruise holiday

Grace has a cruiser stern - great for social cruising.

What will be on the boat?

Galley Equipment

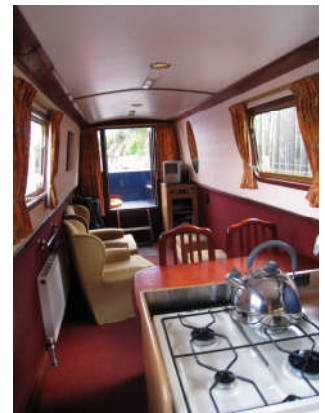
- 1 Kettle
- 1 Frying Pan
- 3 Saucepans & lids
- 1 Pudding basin
- 1 Colander
- 1 Casserole
- 1 Mixing bowl
- 1 One pint jug
- 1 Bread board
- 1 Bread knife
- 1 Grater
- 1 Mixing bowl
- 1 Carving knife
- 1 Carving fork
- 2 Cooks knives
- 1 Wooden spoon
- 1 Sugar bowl
- 1 Teapot
- 1 Fruit bowl
- 1 Pair scissors
- 3 Serving spoons
- 1 Fish slice
- 1 Tin opener
- 1 Bottle opener
- 1 Corkscrew
- 1 Grillpan
- 1 cafetiere
- 1 Potato masher
- 1 Pair oven gloves/oven mitt
- 1 Toast rack
- 2 Tea Towels
- 1 Dishcloth
- Toilet paper

Table Equipment

- One each of the following per berth:
- Table knife
 - Table fork
 - Teaspoon
 - Dessert spoon
 - Soup spoon
 - Tea plate
 - Dinner plate
 - Cereal bowl
 - Cup and saucer
 - Mug
 - Egg cup
 - Beer Glass
 - Wine glass
- Bedding**
- Duvets and covers
 - 2 Pillows per berth
 - 2 Pillowcases per berth
- Cleaning Equipment**
- 1 Broom
 - 1 Toilet brush and stand
 - 1 First aid kit
 - 1 Dustpan and brush
 - 1 Bucket
 - 1 Carpet Sweeper
 - 1 Floor cloth

Navigation Equipment

- 1 Boarding plank
 - 1 Boat pole
 - 1 Boat hook
 - 1 Water hose
 - 1 Life ring
 - 2 Mooring spikes
 - 1 Club hammer
 - 2 Double windlasses
 - 1 Deck mop
- Heating**
- Central heating boiler and hot tank with airing cupboard.
- Electrical Equipment**
- 240v shaver point (for shaver only).
 - Hair Dryer
 - 12v socket
 - Cigar Lighter
 - Electric lighting throughout.
 - Colour Television/DVD Player
 - Radio/CD player



What's on board Genevieve?



Genevieve has a semi-traditional stern - great for social cruising but retaining the traditional look.

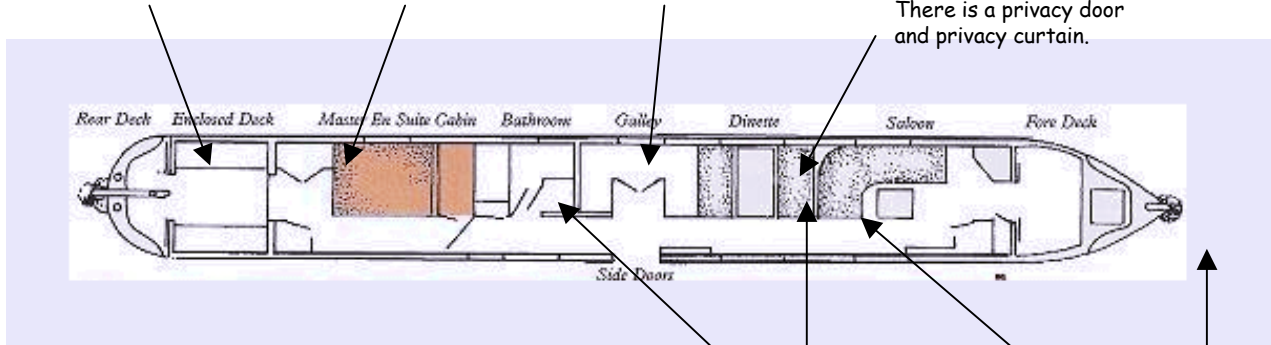
This berth comprises of a double bed, an ensuite sink built in wardrobes and partition doors for extra privacy.

There is also a radio/cassette player.

The galley has a 4 ring gas cooker, microwave, full size oven and grill. There is an electric fridge with freezer compartment

There are side doors so you can feed the swans !

There is a raised dining area with large window. This converts to the second double berth. There is a privacy door and privacy curtain.



What will be on the boat?

Galley Equipment

- 1 Kettle
- 1 Frying Pan
- 3 Saucepans & lids
- 1 Pudding basin
- 1 Colander
- 1 Casserole
- 1 Mixing bowl
- 1 One pint jug
- 1 Bread board
- 1 Bread knife
- 1 Grater
- 1 Mixing bowl
- 1 Carving knife
- 1 Carving fork
- 2 Cooks knives
- 1 Wooden spoon
- 1 Sugar bowl
- 1 Teapot
- 1 Fruit bowl
- 1 Pair scissors
- 3 Serving spoons
- 1 Fish slice
- 1 Tin opener
- 1 Bottle opener
- 1 Corkscrew
- 1 Grillpan
- 1 cafetiere
- 1 Potato masher
- 1 Pair oven gloves/oven mitt
- 1 Toast rack
- 2 Tea Towels
- 1 Dishcloth
- Toilet paper

Table Equipment

- One each of the following per berth:
- Table knife
 - Table fork
 - Teaspoon
 - Dessert spoon
 - Soup spoon
 - Tea plate
 - Dinner plate
 - Cereal bowl
 - Cup and saucer
 - Mug
 - Egg cup
 - Beer Glass
 - Wine glass
- ### Bedding
- Duvets and covers
 - 2 Pillows per berth
 - 2 Pillowcases per berth
- ### Cleaning Equipment
- 1 Broom
 - 1 Toilet brush and stand
 - 1 First aid kit
 - 1 Dustpan and brush
 - 1 Bucket
 - 1 Carpet Sweeper
 - 1 Floor cloth

Navigation Equipment

- 1 Boarding plank
 - 1 Boat pole
 - 1 Boat hook
 - 1 Water hose
 - 1 Life ring
 - 2 Mooring spikes
 - 1 Club hammer
 - 2 Double windlasses
 - 1 Deck mop
- ### Heating
- Central heating boiler
- ### Electrical Equipment
- 240v shaver point (for shaver only).
 - Hair Dryer
 - 12v socket
 - Cigar Lighter
 - Electric lighting throughout.
 - Colour Television/DVD Player
 - Radio/CD player
 - Microwave

There is a shower room with a wash hand basin and flush toilet. All towels are included for your holiday.



The lounge area has an extended wrap around seating area which converts to the third double bed. There is a solid fuel stove for those cosy nights in and also a selection of games onboard.

There is a TV/DVD and a radio/cd player.



Your questions answered....

Arrival & Departure

We endeavour to have the boat ready for collection at 3.00pm on the start day of your holiday. If for any reason you are unable to arrive on time please contact us. Your boat must be returned and vacated by 9am on the last day.

Tuition

No previous experience is necessary, as our boat full tuition is given at the start of every holiday.

We pride ourselves on our training for beginners lasting approximately 3hrs and including:

- Full boat operating systems
- Emergency procedures
- Turning round
- At least 3 locks.

We provide a 24hr emergency helpline and a detailed manual of our training course is provided on board.

Maps & Guides

A number of guides are available for planning your trip or locating all the sites of interest, pubs, shops and facilities along your route.

Bedding & Towels

We provide freshly laundered bedding and towels free of charge

Buoyancy Aids

There are buoyancy aids available free of charge for both children and adults (compulsory for children under the age of 16 and non-swimmers). They need to be booked in advance so the correct size can be arranged.

Young Children

A narrowboat holiday is superb for families. Cot-sides can be provided for very small children on standard berths. A travel cot is available for babies.

Simply indicate this on the booking form.

Mobile phone charging

Our boats have a 12-volt electricity supply with a car-type cigar lighter socket that can be used with a mobile phone in car adapter lead (bring your own lead).

Extras

There are no unexpected extras to pay. If you want to take advantage of the solid fuel stove on Genevieve this is the only extra.

Parking

There is ample open air parking at our base which is provided free of charge. We regret that we cannot accept responsibility for loss or damage to hirers' vehicles.

